

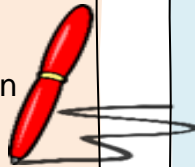


30th January 2026

AUTHOR OF THE MONTH

Well done to the following children for being selected as Author of the month:

Nursery	Romeo	3.2	Bella
R1	Kalada	4.1	Zakary
R2	Thomas P	4.2	Isa
1.1	Rian	5.1	Ava
1.2	Irha	5.2	Freddie
2.1	Bethania	6.1	Ariella
2.2	Imran	6.2	Sebastian
3.1	Advika		



MERITS

Well done to the following children for achieving their merit certificate this week:

Harley	1.1	Imogen	4.1
Annie	1.1	Theo	4.2
Othniel	2.1	Nikan	4.2
Esther	2.1	Chace	5.1
Charlie	2.2	Shruthi	5.1
Ruby	2.2	Ellydia	5.2
Bella	3.1	Tanvi	5.2
Rocco	3.1	Daniel	5.2
Daniel	3.1	Freddie	5.2
Archie	3.1	Tanaka	5.2
Ollie	4.1	Jack	5.2



FAB FRIDAY

Well done to the following children for being selected to sit at the Fab Friday lunch table:

R.1	Lenny	R.2	Noah
1.1	Reuben	1.2	Angela
2.1	Geraldine	2.2	Sydney
3.1	Kevin	3.2	Taylen
4.1	Anashe	4.2	Luna
5.1	Ava	5.2	Dominic
6.1	Modesire	6.2	Emilia

ATTENDANCE OF THE WEEK 19th – 23rd January 2026

WINNERS Year 2.1

Reception 1	95.3%
Reception 2	92.1%
Year 1 Class 1	87.9%
Year 1 Class 2	96.7%
Year 2 Class 1	99.3%
Year 2 Class 2	98.3%
Year 3 Class 1	95.0%
Year 3 Class 2	96.6%
Year 4 Class 1	96.8%
Year 4 Class 2	96.3%
Year 5 Class 1	97.3%
Year 5 Class 2	97.3%
Year 6 Class 1	95.5%
Year 6 Class 2	98.7%
Weekly Attendance	95.9%



Signs of the Week




Aunt



Uncle



UPCOMING DATES FOR DIARIES



03.02.26	Year 4.2 class assembly – parents invited Reception local walk	9.15am – 9.45am Afternoon
02.02.26 – 06.02.26	Nursery stay and play – parents invited	
09.02.26	Year 1 & 2 parent coffee morning	9.00am
10.02.26	Safer Internet Day	
11.02.26	Year 3 Live Learning – parents invited Dentist talk to Reception children Eco Committee Big School's Birdwatch	9.00am – 9.45am 10.45am – 11.20am 3.15pm – 4pm
13.02.26	Year 4.1 Living Things workshop Year 4.2 Living Things workshop PSA Krispy Kreme doughnut sale	Morning Afternoon 3.15pm – 3.30pm
	16.02.26 – 20.02.26 – Half Term	
23.02.26	INSET day	
24.02.26	Children return to school	
25.02.26	Reception 2 Live Learning – parents invited	9.00am – 9.45am
26.02.26	Reception 1 Live Learning – parents invited	9.00am – 9.45am
02.03.26	EYFS parent coffee morning	9.00am
03.03.26 & 04.03.26	Reception 1 Parent Teacher consultations with Miss McPherson	3.30pm – 6.00pm
03.03.26	Year 2.2 class assembly – parents invited	9.15am – 9.45am

REMINDERS

RECEPTION 1 PARENT/TEACHER CONSULTATIONS

Reception 1 Parent/Teacher Consultations are being held on Tuesday 3rd March and Wednesday 4th March with Miss McPherson. Appointments can be made through the Parent Portal or Arbor App. They will be available to book until Wednesday 25th February at 4pm. Each appointment is 10 minutes is long.

DISABLED BADGE HOLDERS

A reminder that anyone who is granted access to the school car park and is wishing to park in the disabled bay must clearly display their blue badge.

FEBRUARY HALF TERM PLAYScheme

Bookings are open for our Spring Playscheme which will run from Monday 16th February – Friday 20th February. Booking and registration forms can be downloaded from our website or paper copies are available from the school office and from Extended Services.

<https://www.howedell.herts.sch.uk/playschemes/>

STAY & READ

Nursery and Reception parents/carers are invited to our Stay and Read sessions every Tuesday from 8.40 - 8.55.

LUNCH ORDERS

Please remember to order your child's lunch through school grid. If lunch has not been ordered, you will need to bring in a packed lunch which must not contain hot food.

UNIFORM & CLOTHING

Please ensure children's clothing and uniform is named. PE tops are available to order, please come to the school office to collect an order form. All children should have a pair of plimsolls kept in school for indoor use.