



Value of the term: Growth

Dear Parents and Carers,

Welcome back to what only can be described as Arctic weather conditions. I do hope you all managed to have an enjoyable Christmas break. It was lovely to be greeted by a sea of smiling faces at Monday morning's assembly.

We have launched our suite of 'Growth' assemblies with a focus on what humans need to grow. The area we looked at was sleep and that children need between 9-12 hours of high quality sleep. We discussed the importance of darkness to aid sleep and we have all pledged to charge our plethora of mobile devices out of our bedrooms. Lots of children shared that they do this already however it would be great if we could have whole school success with this.

Attached to our website is a slide which I shared in my assembly and it would be great if you could share this at home with your children; thank you.

<https://www.howedell.herts.sch.uk/newsletter-attachments/>

Leaders and teachers have had a busy start to the term as we have been holding our Pupil Outcome Meetings. It is here where we discuss the attainment and progress of every child in class and what is required to enable children to meet expected standards by the end of the Academic Year. It is lovely to hear how passionate teachers are about the children in their cohort and the plans they have to remove barriers and accelerate progress.

On Wednesday it was lovely to tour more prospective Reception parents for September. They provided such lovely feedback regarding how focussed and polite the children are and what a lovely school this is. I have to say I love showing visitors around Howe Dell as the children are so engrossed in their learning they are not interested in my 'tour'. Applications for Reception 2026 places close on 15th January.

It was lovely to welcome Year 6 parents to their Science 'Live Learning' session. I do hope you enjoyed working alongside the class and have remembered those Science lessons from a few years ago!

Today Miss Lock and Mrs Griffiths are attending the annual PE conference. We shall really be looking forward to them returning to school and sharing with us all the new ideas to further enhance our PE curriculum offer.

I would like to take this opportunity to welcome Mrs Ogundele, Ms Chukwu and Mrs Light to the team. Mrs Ogundele is working across our Early Years setting with Ms Chukwu supporting learners in Year 2. Mrs Light has joined the team as an MSA and I'm sure you will give them a warm welcome.

Mrs Hart's role has also evolved with a dual role of class TA and learning support assistant. I have seen lots of smiles so she is clearly enjoying her new role.

Next week looks just as busy as this week and Mrs Ritchie, Miss Christmas and I look forward to welcoming Year 3 and Year 4 parents to our coffee morning on Monday at 9.00am.

Wishing you all a lovely weekend and I look forward to seeing you all on Monday. Main doors open from 8.30am and registers are taken at 8.45am.

Kind Regards,

Tracy Prickett

WONDER LUNCHTIME

This week we were delighted to launch our newly named **Wonder Lunchtime**, a title proudly chosen by the children themselves. The playground has been buzzing with excitement as pupils across the school have been playing together and engaging in imaginative play. Many children have been busy pretending to prepare food for their friends and adults, creating their own little cafés and kitchens. Our doll house has been a firm favourite, while others have enjoyed travelling across the playground with toy cars, eagerly awaiting the painting of our new track. The children have also loved taking part in parachute games, showing fantastic teamwork and enthusiasm — a wonderful start to Wonder Lunchtime!



NON-UNIFORM DAY FOR A PLAYGROUND ITEM DONATION

To support our new 'Wonder Lunchtimes', we will be holding a **non-school uniform day on Friday 16th January**, in exchange for donations of items that are still in usable condition. If you have any of the following at home that you are able to donate, we would be extremely grateful (multiple donations per child welcome):

- Small-world toys (e.g. dinosaurs, plastic animals, cars, characters)
- Dolls and doll accessories (e.g. doll prams, beds)
- Items for our kitchen (pots, pans, tubs, utensils, measuring jugs, plastic food items)
- Construction materials (Lego/Duplo, Magna-Tiles)
- Dressing-up clothes or fabric/materials to create costumes
- Microphones (toy or real, working or not, for role-play)
- Other loose parts or imaginative play items
- Larger items such as play kitchens or workbenches (please call ahead to arrange a time to drop off)

Toy donations should be brought in on **Friday 16th Jan** and not before please. Staff members will be available at school drop off time on the 16th to collect in your donations as you arrive to school.

No football kits or cropped tops to be worn please.

Thank you very much for your continued support.

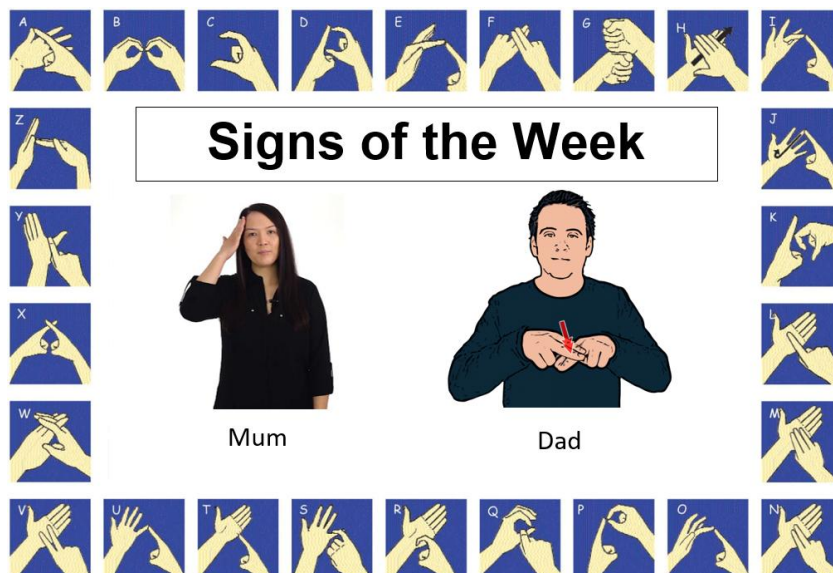
FEBRUARY HALF TERM PLAYScheme

Bookings are open for our Spring Playscheme which will run from Monday 16th February – Friday 20th February.

Our Playscheme will be open to both Howe Dell and Non-Howe Dell children (Reception - Year 6) New families always welcome.

Booking and registration forms can be downloaded from our website or paper copies are available from the school office and from Extended Services.

<https://www.howedell.herts.sch.uk/playschemes/>





UPCOMING DATES FOR DIARIES

12.01.26	Year 3 & 4 parent coffee morning	9.00am
14.01.26	Year 3 & 6 NSPCC workshops	10.35am – 2.45pm
15.01.26	Year 5 NSPCC workshops	9.30am – 11.50am
15.01.26	Reception 2026/27 application deadline	
16.01.26	Non-uniform day for a playground item donation	
22.01.26	Year 5 Live Learning – parents invited	9.00am – 10.00am
23.01.26	RSPB Big Bird Watch	
26.01.26- 30.01.26	Art Festival week	
29.01.26	Year 1 Live Learning – parents invited	9.00am – 9.45am
30.01.26	Author of the month assembly – parents invited SEND parent coffee morning - HPCI	8.55am 9.00am – 10.30am
03.02.26	Year 4.2 class assembly – parents invited	9.15am – 9.45am
02.02.26 – 06.02.26	Nursery stay and play – parents invited	
09.02.26	Year 1 & 2 parent coffee morning	9.00am
10.02.26	Safer Internet Day	
11.02.26	Year 3 Live Learning – parents invited	9.00am – 9.45am
13.02.26	Year 4 Living Things workshop	Times TBC
	16.02.26 – 20.02.26 – Half Term	
23.02.26	INSET day	

REMINDERS



RECEPTION 2026 APPLICATION DEADLINE APPROACHING

The deadline for applying for a Reception place in September 2026 is Thursday 15th January.

<https://live.cloud.servelec-synergy.com/Hertfordshire/Synergy/under11s/>

STAY & READ

Nursery and Reception parents/carers are invited to our Stay and Read sessions every Tuesday from 8.40 - 8.55.

LUNCH ORDERS

Please remember to order your child's lunch through school grid. If lunch has not been ordered, you will need to bring in a packed lunch which must not contain hot food.

Unless your child requires a Halal meal to due religious reasons, please do not select it. If you do select it and it is not for religious reasons your child will be given the vegetarian option.

UNIFORM & CLOTHING

Please ensure children's clothing and uniform is named. PE tops are available to order, please come to the school office to collect an order form. All children should have a pair of plimsolls kept in school for indoor use.

PARKING

Please ensure you are being considerate when parking and are not stopping on double yellow lines or by the front barrier. Spaces in our car park are very limited. We have no capacity for parents to use the school car park at drop off and pick up times.

BEACON PUPILS

On the recommendation of the class teachers, we would like to celebrate our Beacon Pupils this week.

Nursery	Huomachi	For always showing kindness to her friends
Year R1	Oscar	For improved engagement in learning
Year R2	Emily W	For increased participation in class discussions and working hard on independent writing
Year 1.1	Mufaro	For fantastic focus and participation in lessons
Year 1.2	Astrid	For her effort during her learning and independent tasks as well as always being kind and helpful around the school
Year 2.1	Esther	For her enthusiasm and engagement on the carpet in our Maths lessons this week
Year 2.2	Aaliyah	For her efforts in DT
Year 3.1	Meryem	For her impressive attitude to learning
Year 3.2	Aathira	For her excellent contributions and reading out loud to the class
Year 4.1	Ella	For her consistent hard work, lovely presentation and respectful attitude
Year 4.2	Daniella	For actively participating in class discussions
Year 5.1	Oliver	For his hard work and resilience in Maths this week while we have been learning about Fractions
Year 5.2	Jack	For returning to school with an excellent attitude to learning and being a wonderful learning partner
Year 6.1	Stefi	For returning to school with a positive attitude and showing resilience with new topics
Year 6.2	Millie	For her dedication and great work in English

MERITS

Well done to the following children for achieving their merit certificate this week:

Niko	1.1	Kaushiki	3.2
Joys	1.1	Zara	3.2
Sebastian	1.1	Hanan	3.2
Daniel	1.1	Dityashri	4.2
Theo	1.2	Shehryar	4.2
Irha	1.2	Daniella	4.2
Elizabeth	1.2	Isaac	5.1
Chester	3.2		



FAB FRIDAY

Well done to the following children for being selected to sit at the Fab Friday lunch table:

R.1	Ivaan	R.2	Aden
1.1	Mufaro	1.2	Ethan
2.1	Hermione	2.2	Andrea
3.1	Bella	3.2	Hamza
4.1	Ollie	4.2	Nikan
5.1	Tamuda	5.2	Katie
6.1	Raya	6.2	Daniel

ATTENDANCE OF THE WEEK 15th – 18th December 2025	WINNERS Year R.1
Reception 1	99.1%
Reception 2	93.3%
Year 1 Class 1	92.0%
Year 1 Class 2	87.9%
Year 2 Class 1	95.0%
Year 2 Class 2	84.1%
Year 3 Class 1	89.3%
Year 3 Class 2	94.0%
Year 4 Class 1	90.7%
Year 4 Class 2	93.3%
Year 5 Class 1	97.1%
Year 5 Class 2	93.3%
Year 6 Class 1	93.3%
Year 6 Class 2	94.2%
Weekly Attendance	92.6%