



Value of the term: Kindness

Dear Parents and Carers,

Where have the first two weeks of this half term gone? The half term break seems like a distant memory as we returned ready and raring for Autumn 2.

Our INSET day focus was Therapeutic Thinking. This is the therapeutic approach we use for behaviour. As accredited tutors, we delivered full and refresher training to ensure our practice aligns across the school.

To continue our professional development Doug Harmer our HFL Maths Adviser joined us to observe how we are delivering the ESSENTIAL MATHS. His feedback was incredibly helpful, providing us with tips and techniques to fine tune our practice.

Last Friday the school was alive with the sound of music. 'Rock Steady' led an assembly and held workshops for the whole school. We all had a great time and the children demonstrated great music knowledge and application of musical vocabulary. Reception joined us for this exciting event and I was really proud of them as this was their first whole school assembly.



On Monday 11th November, the Year 5 children led our Remembrance Assembly. The words, the poetry and the singing truly encapsulated the importance of this event. It was lovely that so many parents joined us and also sent us information about relatives and countries who served in the war, it truly added that personal touch.



Sergeant
Roy Francis
James Weir

Served in the Welsh
Guards in the Second
World War. Served in Cairo
and Beirut.



At 11.00am the school community fell silent as we gathered on the playground to lay our eco-wreath. This moment of reflection was complimented by a clear blue sky, an old aeroplane flying overhead and the call from the Red Kite who was circling overhead. Howe Dell respectfully remembered.

Tuesday was a busy day with a coffee morning for Year 5 and Year 6 parents and our first 'Live Learning' in Year 3.

Thank you for coming to join us. I hope you found the coffee morning with Mrs Micklewright, Mrs Ritchie and myself useful. If you had any questions that we didn't get to answer, please do not hesitate to email them into admin@howedell.herts.sch.uk.

Over the next few weeks, Mrs Joo and members of the leadership team will be dropping into classes to review the impact of our Maths Curriculum. I know that Mrs Joo and Miss Christmas really enjoyed 'dropping in' to Year 2 and it was lovely to hear how children were confidently explaining their reasoning for solving two-digit addition questions.

I would like to say a huge 'thank you' to the PSA for running the Early Years Craft Party. The event was a huge success and the children thoroughly enjoyed their party.



We are at this time of the year when I get the opportunity to tour prospective parents for the next academic year. It is always a pleasure to show prospective parents Howe Dell 'in action'. If you know of anyone who has a child starting school in September (Nursery or Reception) I would love to show them around.

I know many of you are curious regarding the building work progress. The original plan was to have the project completed by November. Unfortunately there have been some delays, as the initial designs required significant revision following the removal of the original cladding. These drawings have now been signed off and work has resumed. We are now looking at a completion date in January 2025. Thank you for your patience and understanding in this matter.

Wishing you all a lovely weekend.

Kind Regards,

Tracy Prickett

BOOK FAIR SUCCESS

It was wonderful to see so many children and families visit our book fair before half term and enjoy the opportunity to browse and purchase books from the wide selection available.

Your support has helped us to raise over £400 in rewards to spend on books for our school. This is a fantastic amount which would not have been achieved without you. Thank you to everyone who helped to make the book fair such a success!



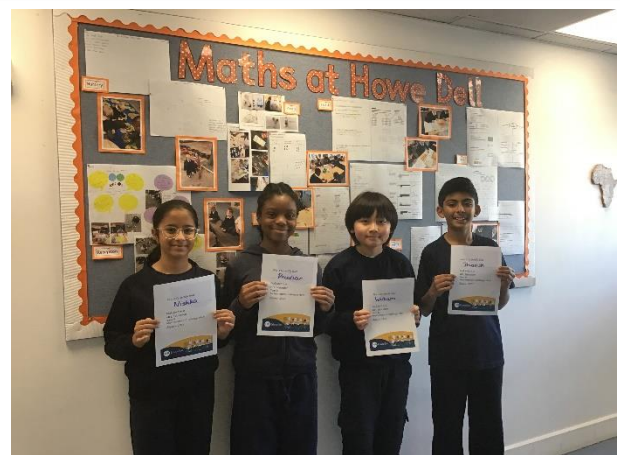
FUTSAL

This week, the children in Year 4 and Year 5 were lucky enough to attend a Futsal competition at Onslow St Audrey's. The girls and boys were split into teams of four and played against other Hatfield Primary Schools. We saw excellent team spirit and the children really engaged with the activity. They learnt the rules of Futsal and were learning how to strategise and create tactics with one another. A great morning was had by all!



HFL Year 6 MATHS CHALLENGE

Team Howe Dell did it again! As a result of their hard work and following on from last year's results, our Year 6 Maths team with Nishka, Peculiar, Devansh and William secured a place in the final of the HFL Education organised competition. With an incredible 180 points - way above the necessary 152 points to qualify - they are amongst the best 20 teams competing for the winning title on the 27th November. Good luck!



ANTI-BULLYING WEEK

This week is Anti-Bullying Week and the theme this year is 'Choose Respect'. Anti-Bullying will be a theme that runs through our learning this half term through our PSHE lessons using our Jigsaw scheme. This allows children to access teaching and learning about this topic as part of their usual safe learning environment. Our Smart School Council will also be holding class meetings where we will discuss the best ways to prevent bullying across our school and the wider world. If you would like to further support your child's learning about Anti-Bullying Week, CBBC have some great stories and resources you can look at together at home. Please click the following link to access these: <https://www.bbc.co.uk/cbbc/curations/anti-bullying-week>

CHILDREN IN NEED

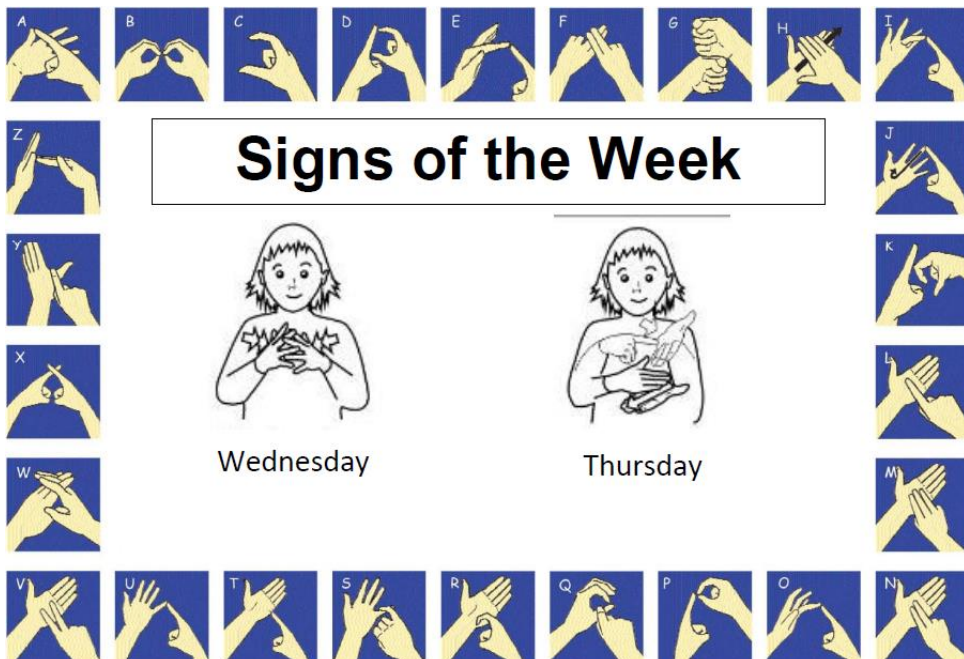
Children were excited this morning to cover their Pudsey pictures in the coins they had bought in to donate to Children in need. There were so many coins we had to quickly photocopy more Pudseys!

A big thank you to families for your generous donations.



SHOWING HUMANITY

This half term, we are talking about Humanity in assembly. We would like to ask the children about a time they have shown humanity, though kindness, looking out for others, compassion, giving our time or to charity. We invite children to share a photo and a paragraph which can be sent to admin@howedell.herts.sch.uk



PSA NEWS

NON-UNIFORM DAY IN EXCHANGE FOR RAINBOW RAFFLE DONATION

Howe Dell PSA are asking families to bring in a donation for the rainbow raffle in exchange for wearing non-school uniform on **Friday 22nd November**.

Each year group has been assigned a colour, please kindly donate new, non-perishable items that are:

Nursery & Staff - **Any colour**

Reception - **Red**

Year 1 - **Orange**

Year 2 - **Yellow**

Year 3 - **Green**

Year 4 - **Blue**

Year 5 - **Purple**

Year 6 - **Pink**

The clothes children wear don't need to match their year group colour, but we ask for no football kits or cropped tops thank you.

CHRISTMAS SHOPPING DAY

Howe Dell PSA will be holding a Children's Christmas Shopping Day in school on Monday 9th December. Children will go, one class at a time, to the 'Christmas Grotto' where they will be able to choose up to 2 small gifts for family or friends.

Each gift is priced at £2.50 (£5.00 maximum spend per child).

Parents are asked to pay their Christmas gift money online by 28th November at:

www.pta-events.co.uk/howedellpsa

Alternatively, a cash/card table will operate on the school playground at pick up time on Monday 25th and Wednesday 27th November for any parents wishing to pay in person.

This is always a very enjoyable activity for the children, with some amazing gifts for sale and we hope as many as possible will take part.


LINKS AND ATTACHMENTS

(Can be found under Newsletter Attachments on our school website)

<https://www.howedell.herts.sch.uk/newsletter-attachments/>

- Junior Park Run Poster
- Stop Means Stop Campaign
- SuperSkills Poster
- Supporting your child with KS2 SAT's Maths

UPCOMING DATES FOR DIARIES



Date	Event	Time
19/11/2024	Flu Vaccinations Year 4 Galleria Odeon Cinema Trip	8.30am – 12.30pm 11.00am
20/11/2024	Year 5 Trip to Natural History Museum (drop off and collection at Hatfield Train Station) Year 3 Galleria Odeon Cinema Trip	9.00am – 4.00pm 1.00pm
21/11/2024	Nursery Local Sound Walk Reception Screening – Children born up to end of February	9.30am
22/11/2024	Author of the Month Assembly – Parents Invited PSA Non-Uniform for a Rainbow Raffle donation PSA Glow Disco – Years 1,2 & 3	8.55am 3.15pm – 5.00pm
W/C 25/11/2024	Nursery Stay & Plays	11.00am – 11.30am 2.30pm – 3.00pm
27/11/2024	Year 2 Great Fire of London History Workshop	
28/11/2024	Year 2 Galleria Odeon Cinema Trip	11.00am
29/11/2024	SEND Coffee Morning – Supporting Parents PSA Glow Disco – Years 4,5 & 6	9.00am – 10.30am 3.15pm – 5.00pm

REMINDERS

SPRING TERM MILK

If you would like to order milk for your child for the Spring Term, please complete the survey emailed out to parents and make payment, if applicable, on Arbor by 6th December.

EARLY YEARS READING

Every Tuesday morning (8.40am – 8.55am) Reception and Nursery classes would love parents/carers to join them in a shared reading session. For afternoon Nursery the session is 12.20pm – 12.40pm.

BIKES & SCOOTERS

For everyone's safety please ensure bikes and scooters are not being ridden on the school premises. Once on-site children should be dismounting and wheeling their bikes and scooters to the designated storage areas. Please ensure your child is wearing a helmet as this protects their heads should they fall off their bikes/scooters.

LUNCH ORDERS

Please remember to order your child's lunch through school grid. If lunch has not been ordered, you will need to bring in a packed lunch which must not contain hot food.

UNIFORM AND CLOTHING

Please ensure children's clothing and uniform is named. PE tops are available to order, please come to the school office to collect an order form. Orders will be completed on a weekly basis. All children should have a pair of plimsolls kept in school for indoor use. Earrings should be studs.

PARKING

Please ensure you are being considerate when parking and are not stopping on double yellow lines or by the front barrier. Spaces in our car park are very limited. We have no capacity for parents to use the school car park at drop off or pick up times.

BEACON PUPILS

On the recommendation of the class teachers, we would like to celebrate our Beacon Pupils this week.

Nursery	Ethan	For making excellent contributions to our phonics lessons and always trying his best
Year R1	Ethan	For improved attention and participation in phonics
Year R2	Elijah	For making fantastic progress with his reading and for giving detailed contributions in our class discussions using key vocabulary
Year 1.1	Hermione	For trying her best with her learning this week
Year 1.2	Grace	For her attitude to learning and working independently
Year 2.1	Zara	For her enthusiasm and 'give it a go' attitude in all of her learning
Year 2.2	Bella	For being a positive role model and consistently demonstrating excellent behaviours for learning
Year 3.1	Dityashri	For her great use of key vocabulary when explaining in class
Year 3.2	Zaafirah	For always giving learning 'a go' and supporting her peers
Year 4.1	Baran	Taking responsibility for her work and always showing respect to teachers and classmates
Year 4.2	Brian	For excellent contributions during reading lessons
Year 5.1	Millie-Rose	For working so hard since returning from half term and having a fantastic attitude to learning
Year 5.2	Isabella	For working extremely hard this week and showing great focus. She has also been a supportive learning partner
Year 6.1	Ellie	For working extremely hard in her Maths lessons
Year 6.2	Joseph	For his great work in every lesson

MERITS

Well done to the following children for achieving their merit certificate this week:

Ridhita	1.1	Violetta	3.1
Troy	1.1	Nikan	3.1
Adele	1.1	Amie	3.1
Sydney	1.2	Mayumi	3.1
Aaliyah	1.2	Jedidiah	3.1
Andrea	1.2	Kamari	3.2
Lexi	2.2	Anashe	3.2
Rocco	2.2	Kane	3.2
Jonathan	2.2	Erin	3.2
Fae	2.2	Marvelous	4.1
Andreas	2.2	Milly L	5.1
Vinuli	2.2	Carter	5.1



ATTENDANCE OF THE WEEK 5th - 8th November 2024	WINNERS Year R2
Reception 1	98.8%
Reception 2	100.0%
Year 1 Class 1	98.7%
Year 1 Class 2	97.9%
Year 2 Class 1	96.0%
Year 2 Class 2	95.8%
Year 3 Class 1	97.9%
Year 3 Class 2	97.5%
Year 4 Class 1	98.3%
Year 4 Class 2	97.1%
Year 5 Class 1	96.6%
Year 5 Class 2	98.3%
Year 6 Class 1	96.7%
Year 6 Class 2	96.7%
Weekly Attendance	97.6%