



### Value of the term: Growth

Dear Parents and Carers,

Happy New Year! It was so lovely to welcome you all back to school following our Christmas break, albeit a little chilly. We commenced the term with an assembly where we reminded ourselves of the Golden Expectations and what that looks like as we go about our business in school.

Rock Steady commenced their band sessions and the children left their sessions buzzing with enjoyment. Continuing our musical theme, Electric Umbrella joined us for a whole school music workshop. The children gained so much from the session and the Electric Umbrella team members were incredibly impressed by our children. It was also rather special for me as I was reunited with my Year 5 teaching partner from 1999 as her daughter joined the team especially for us. I would like to thank the PSA for funding this experience and we are looking forward to working with Electric Umbrella later in the year.



It was lovely to see so many parents joining us for Year 4's 'Live Learning'. I do hope that you found the Maths session useful. I wanted to thank you for all your support you have given to turn your child's times table heat map 'green'. Children in Year 4 are demonstrating some rapid times-table recall.

Staff have undertaken a range of professional development since returning to school. Mrs Wall, Mrs Field and I have delivered Therapeutic Thinking initial and refresher training and both Mrs Field and I undertook our tutor training which means we are accredited to train for another year. Nicola Winch, our SEND Governor, delivered a session to teachers on trauma and attachment. This was very well received and we plan to hold sessions for our TA's.

Our building project continues and I have to say I was extremely excited to see the cladding being attached to the building. Miss Brewster, our History subject leader, with the children created a 'time capsule' which we have placed in the building ready to be discovered in many years to come.



Thank you for joining Mrs Ritchie and I at the Year 3 and 4 coffee morning. It was lovely to spend the time with you and your feedback will shape the work of our school. We had a long discussion about mobile phones and in particular smart phones and the impact these can have. There was a great documentary on channel 4 over Christmas presented by Emma and Matt Willis entitled 'Swiped' which is well worth a watch.



Over the Christmas break I announced that I needed to become addicted to exercise. This has been a bit of a slow start however if you would like to be more physically active we are hosting 'Yoga campus' on a Wednesday evening and 'Clubbercise' on a Thursday evening.

Miss Palmer and baby George popped in to see us. George is growing up really quickly and it was lovely to see them both.

Today is the day that Miss Lass heads out on her maternity leave. She has worked incredibly hard and it is now time for her to start 'nesting' before baby arrives. Miss Lass, Mrs Mehmet and Mrs Micklewright have been working together over the past fortnight to ensure a smooth transition. I'm sure you will join with me to wish Miss Lass well and we look forward to welcoming her baby into the world.

Wishing you all a lovely weekend

Kind Regards,

Tracy Prickett

### **STAFFING UPDATE**

You may have noticed that Mrs Banerjee's sunshine smile is missing from Howe Dell. Mr Banerjee's job required a relocation to Newcastle and so the family have relocated. I'm sure you will be pleased to hear that Mrs Banerjee has settled well into her new environment and has been 'out and about' discovering the delights that Newcastle has to offer.

Mr Ellis has stepped into the class TA role and will be working in 6.1 for the remainder of the Academic Year.

### **HANSIDE DENTAL SURGERY VISIT**

This week Reception had a visit from the dentists to learn about keeping our teeth clean and healthy. We then had a go at being a dentist and brushing the teeth including the tongue and gums.



### **SPRING TERM CLUBS**

Our Spring Term Clubs commenced this week. Here are some of the children in Choir and Chess club enjoying their after-school activities.



### **FEBRUARY PLAYScheme**

We are pleased to announce that we will be running a Playscheme in the February half-term from Monday 17th to Friday 21st February.

Our Playscheme is open to both Howe Dell and non Howe Dell children from 8am-6pm.

Spaces are limited so please book early.

All the relevant forms can be found on our website or paper copies can be collected from the school office. <https://www.howedell.herts.sch.uk/playschemes/>

## PSA NEWS

### EASY FUNDRAISING

You can raise money for Howe Dell by shopping online via Easy Fundraising.

Easy Fundraising partners with over 8,000 brands who will donate part of what you spend to Howe Dell PSA. It won't cost you any extra. The cost is covered by the brand.

Take two minutes to sign up today and you can start raising free funds every time you shop!

<https://www.easyfundraising.org.uk/causes/howedellprimaryschoolpsa/>



### UPCOMING DATES FOR DIARIES



22/01/2025	Recycling & Sustainability Year 4 Workshop	
24/01/2025	RSPB Big Bird Watch ADVANCE Parent Session for ADHD	9.00am – 10.30am
28/01/2025	3.2 Class Assembly – Parents Invited	9.15am – 9.45am
29/01/2025	Year 6 Maths Live Learning – Parents Invited	9.15am – 10.15am
03/02/2025 to 07/02/2025	Art Festival Week	
04/02/2025	3.1 Class Assembly – Parents Invited	9.15am – 9.45am
06/02/2025	Year 2 Maths Live Learning – Parents Invited	9.15am – 10.00am
W/C 10/02/2025	Nursery Stay & Plays	11.00am – 11.30am 2.30pm – 3.00pm
10/02/2025	Year 1 & 2 Parent Coffee Morning	8.45am – 9.45am
11/02/2025	Internet Safety Day 5.2 Class Assembly – Parents Invited	9.15am – 9.45am
13/02/2025	Year 1 Maths Live Learning – Parents Invited	9.15am – 10.00am
14/02/2025	PSA Yes Day	
	<b>17/02/2025 – 21/02/2025 – Half Term</b>	
24/02/2025	<b>INSET day</b>	

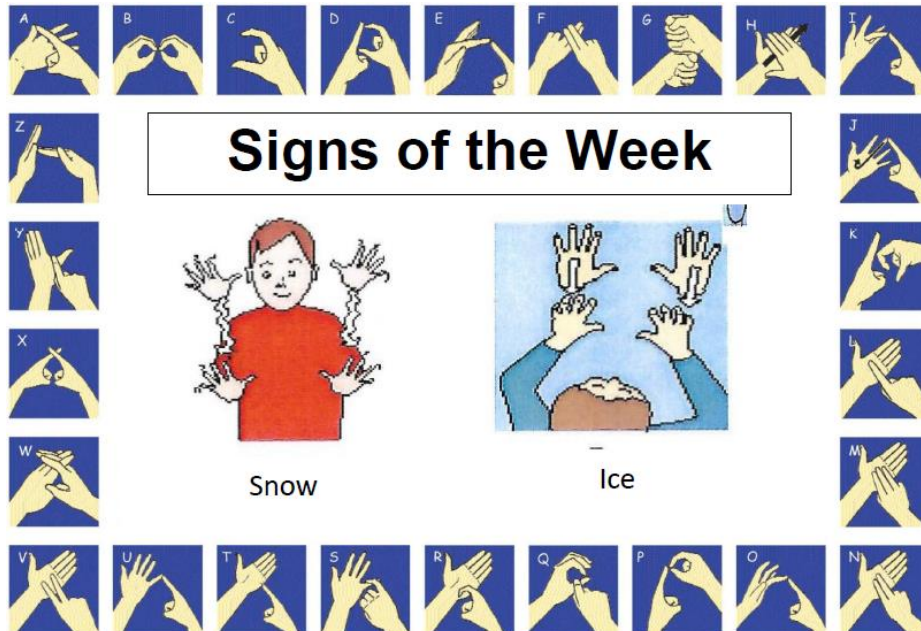
### LINKS AND ATTACHMENTS

*(Can be found under Newsletter Attachments on our school website)*

<https://www.howedell.herts.sch.uk/newsletter-attachments/>



- Beezee Families - 12 week healthy lifestyle programme
- Beezee Families – Recipe that can get your children to eat more vegetables
- Super Skills Soccer poster
- Easy Fundraising - A Year of Raising



## REMINDERS

### NURSERY ADMISSIONS 2025/26

If your child is born between **01/09/2021** and **31/08/2022** they will be due to start Nursery in September 2025. The school Nursery offers 15 hours and 30 hours funded. Applications can be found on our website under <https://www.howedell.herts.sch.uk/admissions/> or paper copies are available from the school office. Applications close on 28<sup>th</sup> March.

### EARLY YEARS READING

Every Tuesday morning (8.40am – 8.55am) Reception and Nursery classes would love parents/carers to join them in a shared reading session. For afternoon Nursery the session is 12.20pm – 12.40pm.

### BIKES & SCOOTERS

For everyone's safety please ensure bikes and scooters are not being ridden on the school premises. Once on-site children should be dismounting and wheeling their bikes and scooters to the designated storage areas. Please ensure your child is wearing a helmet as this protects their heads should they fall off their bikes/scooters.

### LUNCH ORDERS

Please remember to order your child's lunch through school grid. If lunch has not been ordered, you will need to bring in a packed lunch which must not contain hot food.

### UNIFORM AND CLOTHING

Please ensure children's clothing and uniform is named. PE tops are available to order, please come to the school office to collect an order form. Orders will be completed on a weekly basis. All children should have a pair of plimsolls kept in school for indoor use. Earrings should be studs.

### PARKING

Please ensure you are being considerate when parking and are not stopping on double yellow lines or by the front barrier. Spaces in our car park are very limited. We have no capacity for parents to use the school car park at drop off or pick up times.

### MERITS

*Well done to the following children for achieving their merit certificate this week:*

Jaden	1.1	Dahlia	4.2
Kristina	1.1	Amari	4.2
Andra	1.1	Rheon	5.2
Jay	1.1	Sophie	5.2
Ethan	1.1	Millie	5.2
Theo	2.2	Laiken	5.2
Mark	2.2	Kristian	5.2
Atarah	2.2	Rachel	5.2
Etta	3.2	Bella-Mae	6.1
Zara	3.2	Elsie	6.1



### BEACON PUPILS

*On the recommendation of the class teachers, we would like to celebrate our Beacon Pupils this week.*

Nursery	Kalada	For excellent participation during our phonics sessions
Year R1	Ozioma	For her brilliant effort using her phonics skills to write with confidence and independence
Year R2	Ryan	For working hard on his phonics skills and applying it to his independent writing
Year 1.1	Dihen	For writing an excellent story in English
Year 1.2	Roshita	For her amazing work in phonics and independent writing in spelling
Year 2.1	Nila	For her excellent use of adjectives and commas in her writing this week
Year 2.2	Kaden	For using interesting verbs and adjectives in his writing
Year 3.1	Mayumi	For her positivity and growth mindset to her learning
Year 3.2	Cinar	For contributing in class discussion across all subjects
Year 4.1	Marvelous	For showing initiative and always contributing to the learning in class
Year 4.2	Cailin	For challenging herself with times table learning
Year 5.1	Niko	For returning to school with such a positive and determined attitude and demonstrating fantastic behaviours for learning
Year 5.2	Rheon	For making excellent choices this week and being engaged in our lessons. For his participation in class discussions and impressing us with his knowledge during our recent RE lesson
Year 6.1	Istak	For his hard work and fantastic progress in all subjects
Year 6.2	Bella P	For her confidence with long division

<b>ATTENDANCE OF THE WEEK 7<sup>th</sup> – 10<sup>th</sup> January 2025</b>	<b>WINNERS Year 2.1</b>
Reception 1	96.4%
Reception 2	92.7%
Year 1 Class 1	98.8%
Year 1 Class 2	96.3%
Year 2 Class 1	<b>99.1%</b>
Year 2 Class 2	96.6%
Year 3 Class 1	96.3%
Year 3 Class 2	89.6%
Year 4 Class 1	95.8%
Year 4 Class 2	95.7%
Year 5 Class 1	94.2%
Year 5 Class 2	96.1%
Year 6 Class 1	98.3%
Year 6 Class 2	90.8%
<b>Weekly Attendance</b>	<b>95.5%</b>