



14<sup>th</sup> March 2025

**BEACON PUPILS** *On the recommendation of the class teachers, we would like to celebrate our Beacon Pupils this week*

Nursery	Shivani	For sitting and joining in with our phonics lessons
R.1	Nafas	For showing perseverance during tricky tasks and achieving her goals
R.2	Elizabeth	For always following our Golden Expectations and working hard to develop her confidence with reading and sharing ideas
1.1	Maisie	For having a fantastic attitude to learning and for always being a super helper
1.2	Ahmed	For always being polite to everyone and following the Golden Expectations
2.1	Rejoice	For settling well in class and following the Golden Expectations
2.2	Mark	For working hard to apply his phonic knowledge when writing
3.1	Scarlett	For her resilience and giving everything 'a go'
3.2	Rodin	For his determination and giving everything 'a go'
4.1	Oliver	For persevering and always trying his best
4.2	Ibukunoluwa	For settling in to Howe Dell so well and working incredibly hard during DT sewing lessons
5.1	Nicole	For always putting 100% effort and enthusiasm into everything she does and across all her learning
5.2	Oscar	For having a great learning attitude this week and for his perseverance with sewing in D&T
6.1	Nicole	For showing great dedication this week and performing very well in her mock SATs
6.2	Reuben	For the setting description of his fairytale in English

**UPCOMING DATES FOR DIARIES**

W/C 17/03/2025	Neurodiversity Celebration Week	
W/C 24/03/2025	Sign Language Week	
24/03/2025	Phonics Screening Check Workshop – Year 1 Parents Invited	2.45pm - 3.15pm
25/03/2025	6.2 Class Assembly – Parents Invited	9.15am - 9.45am
26/03/2025	Phonics Screening Check Workshop – Year 1 Parents Invited	9.00am - 9.30am
28/03/2025	Applications for September 2025 Nursery Places Close Author of the Month Assembly – Parents Invited	8.55am



## MERITS

Well done to the following children for achieving their merit certificate this week:

Atenea	1.2	Brendan	3.2
Albert	1.2	Prateek	5.2
Daniel O	1.2	Ishaan	5.2
Roshita	1.2	Bella	5.2
Daniel	2.2	Edom	5.2
Bella	2.2	Sophie	5.2
Aditi	2.2	Daniel	5.2
Arielle	3.2	Tanaka	5.2
Ryaan	3.2	Peculiar	6.1



## FAB FRIDAY

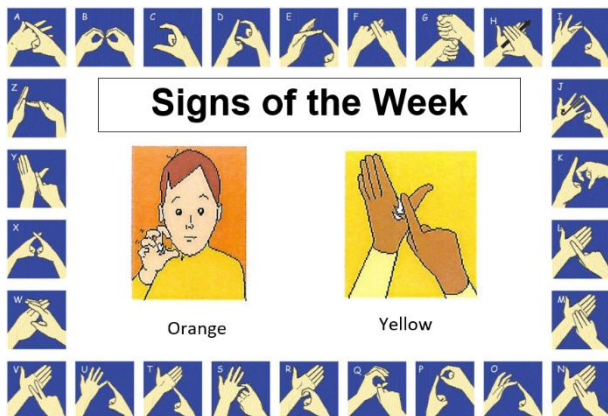
Well done to the following children for being selected to sit at the Fab Friday lunch table:

R.1	Praise	3.2	Ella
R.2	Anastasia	4.1	Olawale
1.1	Sarayu	4.2	Tanvi
1.2	Ahmed	5.1	Victoria
2.1	Josef P	5.2	Ishaan
2.2	Lexi	6.1	Prince
3.1	Luna & Millie	6.2	Piajoyce

### ATTENDANCE OF THE WEEK 3<sup>rd</sup> – 7<sup>th</sup> March 2025

### WINNERS Year 1.1

Reception 1	97.4%
Reception 2	95.9%
Year 1 Class 1	99.3%
Year 1 Class 2	94.7%
Year 2 Class 1	98.6%
Year 2 Class 2	95.7%
Year 3 Class 1	98.0%
Year 3 Class 2	95.7%
Year 4 Class 1	96.3%
Year 4 Class 2	97.7%
Year 5 Class 1	96.6%
Year 5 Class 2	97.3%
Year 6 Class 1	93.1%
Year 6 Class 2	98.0%
<b>Weekly Attendance</b>	<b>96.7%</b>



## REMINDERS

### EASTER PLAYScheme

Our Easter Playscheme will run from Monday 7th to Friday 11th April 2025 and will be open to both Howe Dell and Non Howe Dell children from 8am-6pm (Reception - Year 6).

All the relevant forms can be found on our website or paper copies can be collected from the school office.

<https://www.howedell.herts.sch.uk/playschemes/>

### SUMMER TERM MILK

If you would like to order milk for your child for the Summer Term, please complete the survey emailed out to parents and make payment, if applicable, on Arbor by 21<sup>st</sup> March.

### EARLY YEARS READING

Every Tuesday morning (8.40am – 8.55am) Reception and Nursery classes would love parents/carers to join them in a shared reading session. For afternoon Nursery the session is 12.20pm – 12.40pm.

**NURSERY ADMISSIONS 2025/26** If your child is born between **01/09/2021** and **31/08/2022** they will be due to start Nursery in September 2025. The school Nursery offers 15 hours and 30 hours funded. Applications can be found on our website under <https://www.howedell.herts.sch.uk/admissions/> or paper copies are available from the school office. Applications close on 28<sup>th</sup> March.